

# Spellementary®

## Dragon® Vocabulary Integration

Spellementary integrates with Dragon® by building “Vocabularies” based upon the specialist lexicons that are available according to the licence.

	Legal Dictionary	Medical Dictionary	A-Z of Medicinal Drug Names
Legal Professional	✓		
Medical Professional		✓	✓
Elite	✓	✓	✓

Table 1: Lexicon to Edition Assignment

Simply access the Assistive Technologies tab within the Spellementary settings and follow the instructions.

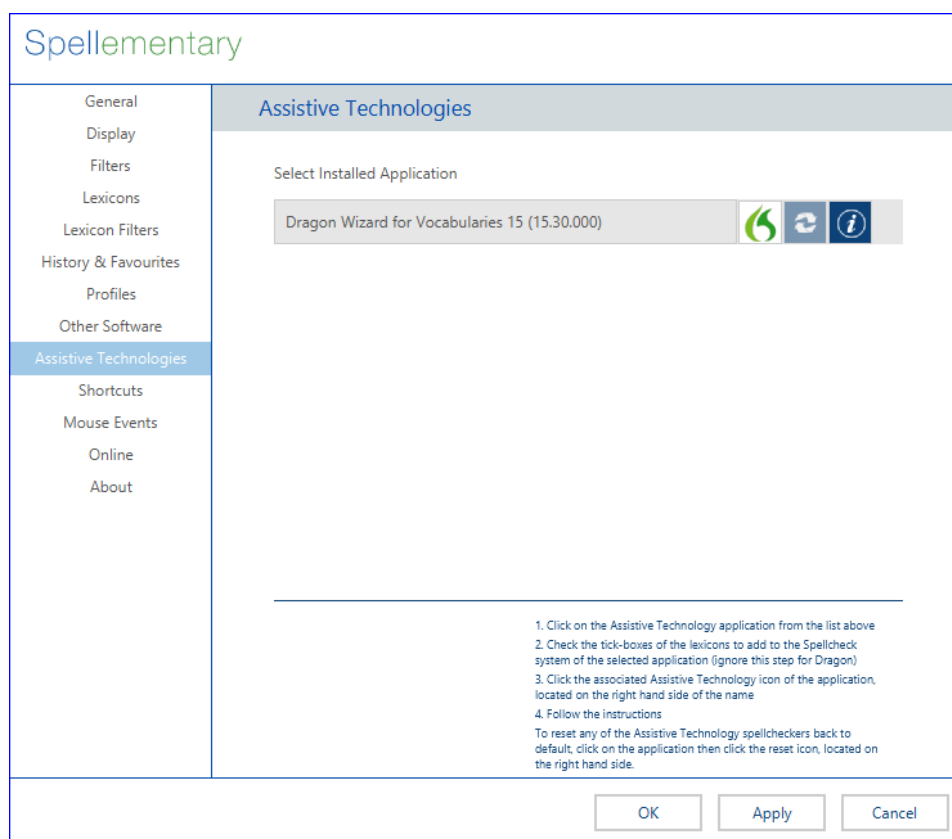


Diagram 1: Settings Panel

This process will build an additional 7 vocabularies that will be made available in Dragon®. When using Dragon® there are 2 ways to access the vocabulary depending upon whether a user-profile is to be newly created or there already being one in existence.

## Creating the Vocabulary files from Spellementary

The process of generating the vocabulary files for use in Dragon® is simple.

Step 1: Click on the settings icon from the main Spellementary interface (Diagram 2)

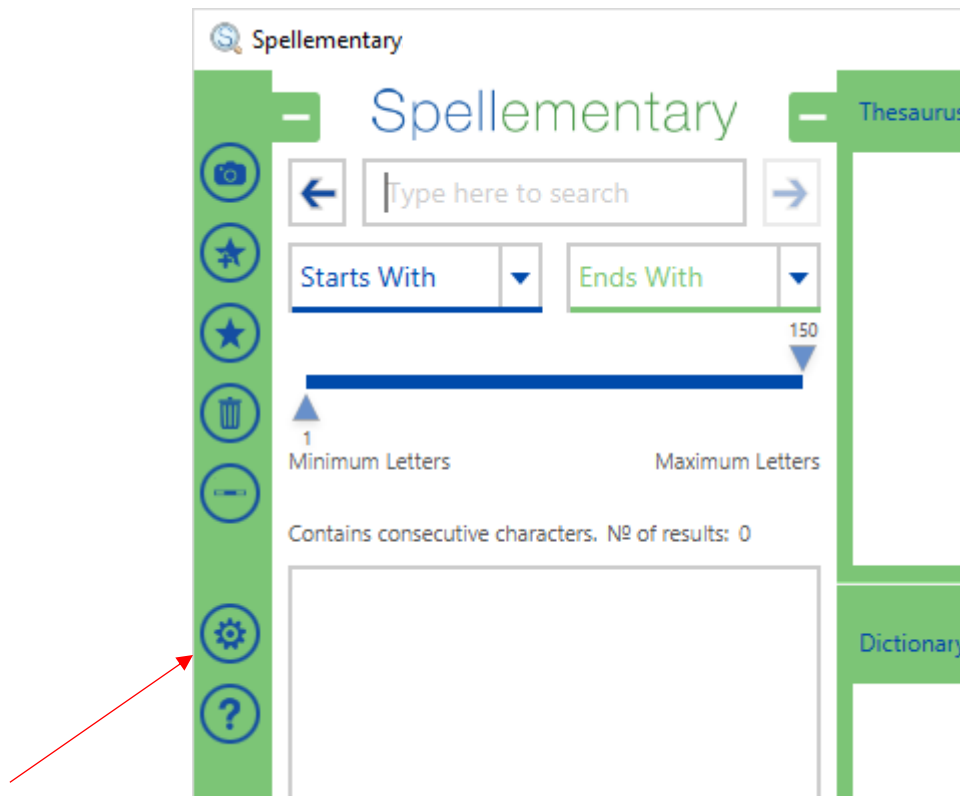


Diagram 2: Spellementary Interface

Step 2: Click on the “**Assistive Technologies**” tab from the settings panel (Diagram 1)

Step 3: Click on Dragon® icon and this will initiate the Dragon® Vocabulary export wizard

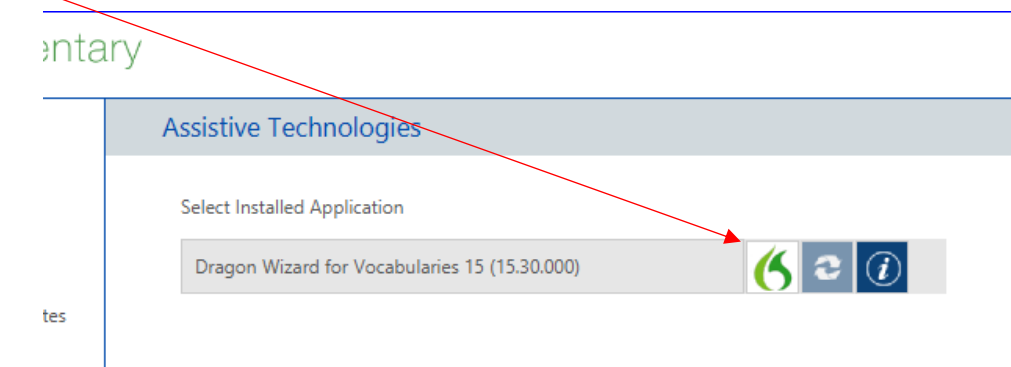


Diagram 3

Step 4: Follow the steps of the wizard

## Using the Vocabulary files with a Dragon® Profile

### Scenario 1: 1st time User of Dragon® – New User Setup

If you are using Dragon® for the 1<sup>st</sup> time, or are setting up a new Dragon® user profile, vocabularies generated by Spellementary will be available when running through the new user setup wizard.

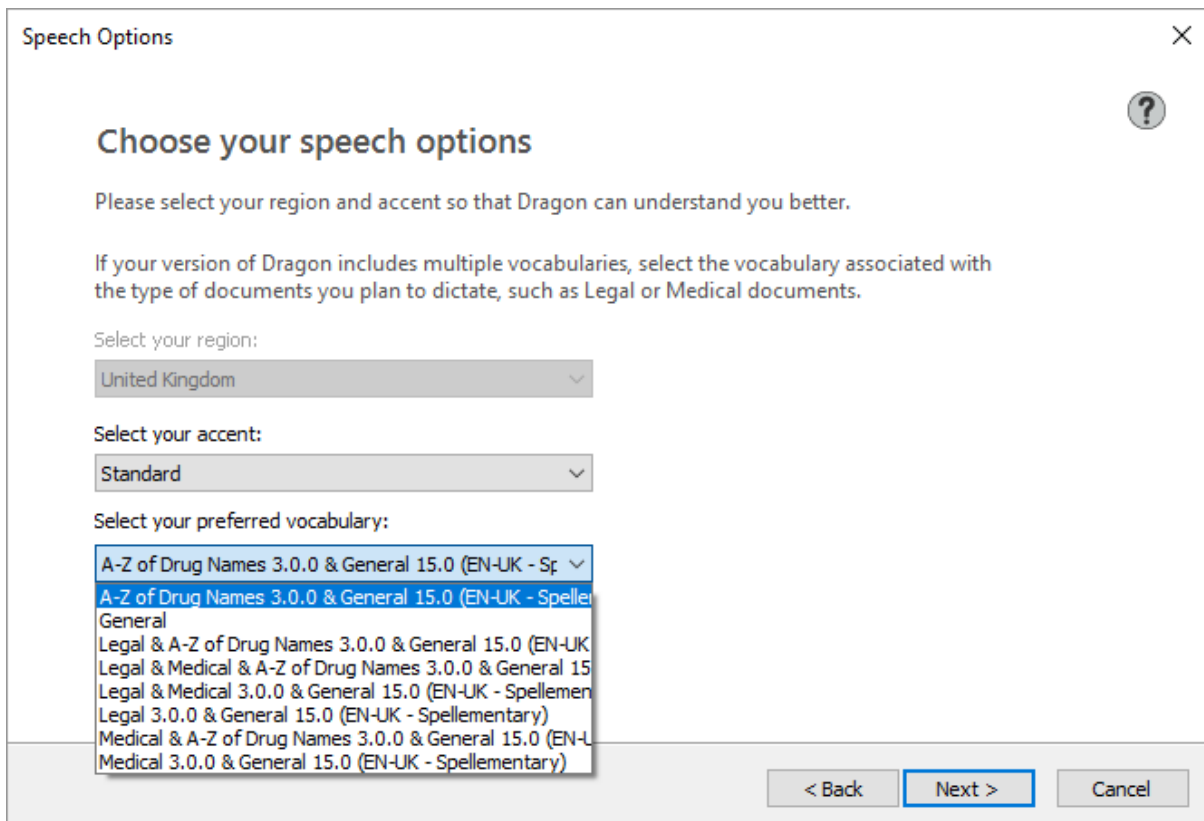


Diagram 3: Dragon® New User Wizard

## Scenario 2: Existing Dragon® User – Importing to an existing profile

If you have already been using Dragon®, it is possible to add one, or more, of the vocabularies to an existing profile through the “Manage Vocabularies...” option found in the “Vocabulary” menu.

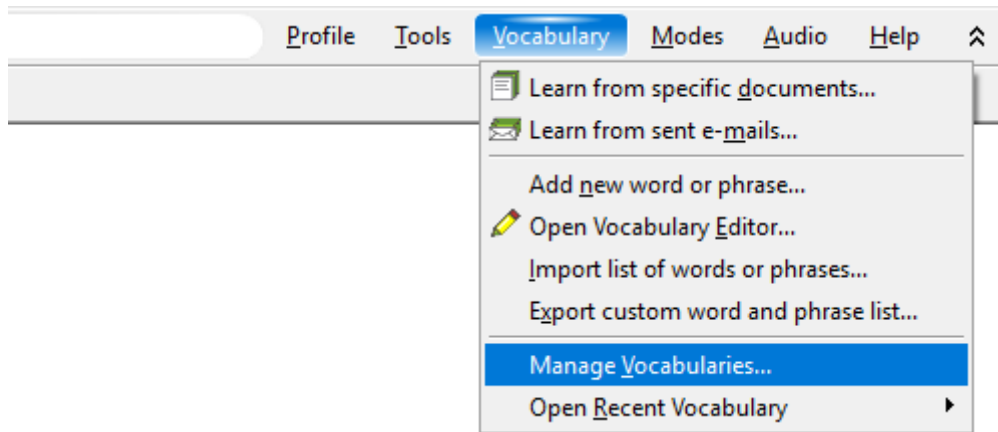


Diagram 4.1: Dragon® Vocabulary Menu

Once here, you can choose from a variety of vocabularies to add. By adopting this method, it is possible to choose between different vocabularies depending on what is being dictated.

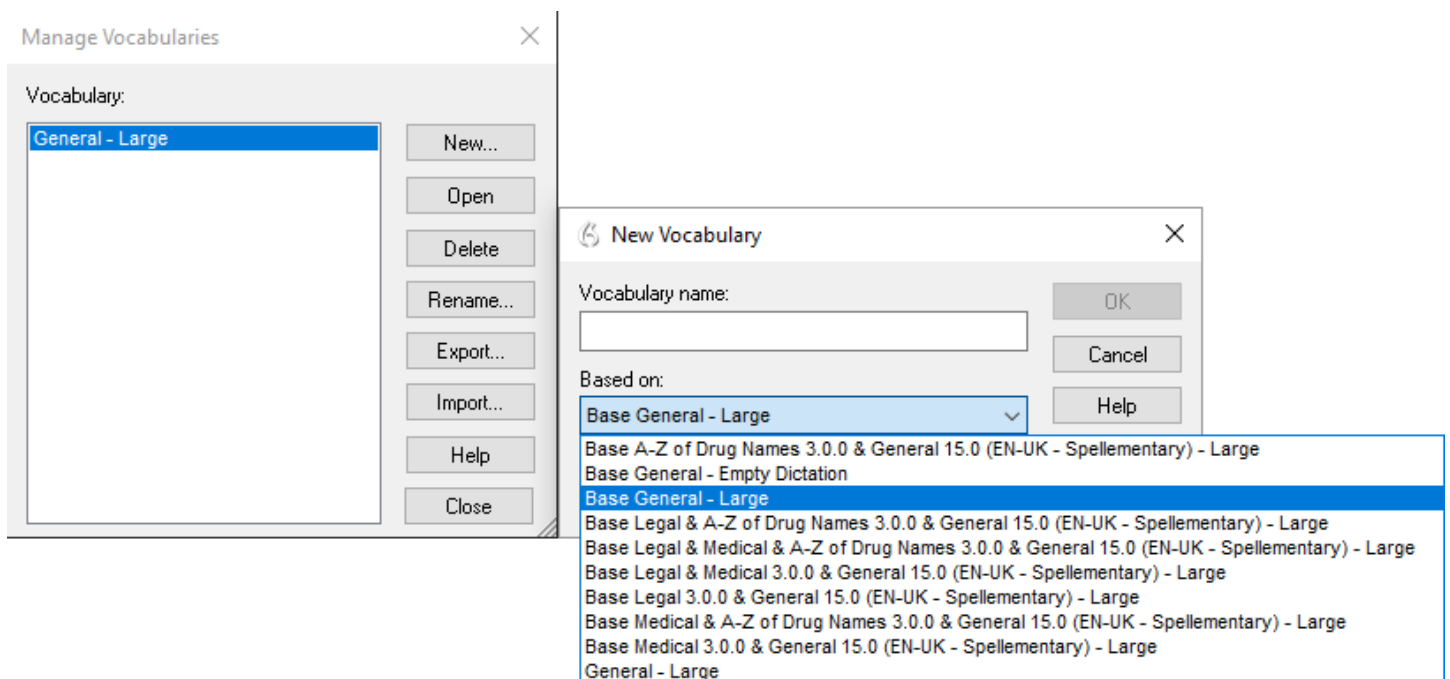


Diagram 4.2: Dragon® New Vocabulary Option

Note: Dragon® is a registered trademark of Nuance®